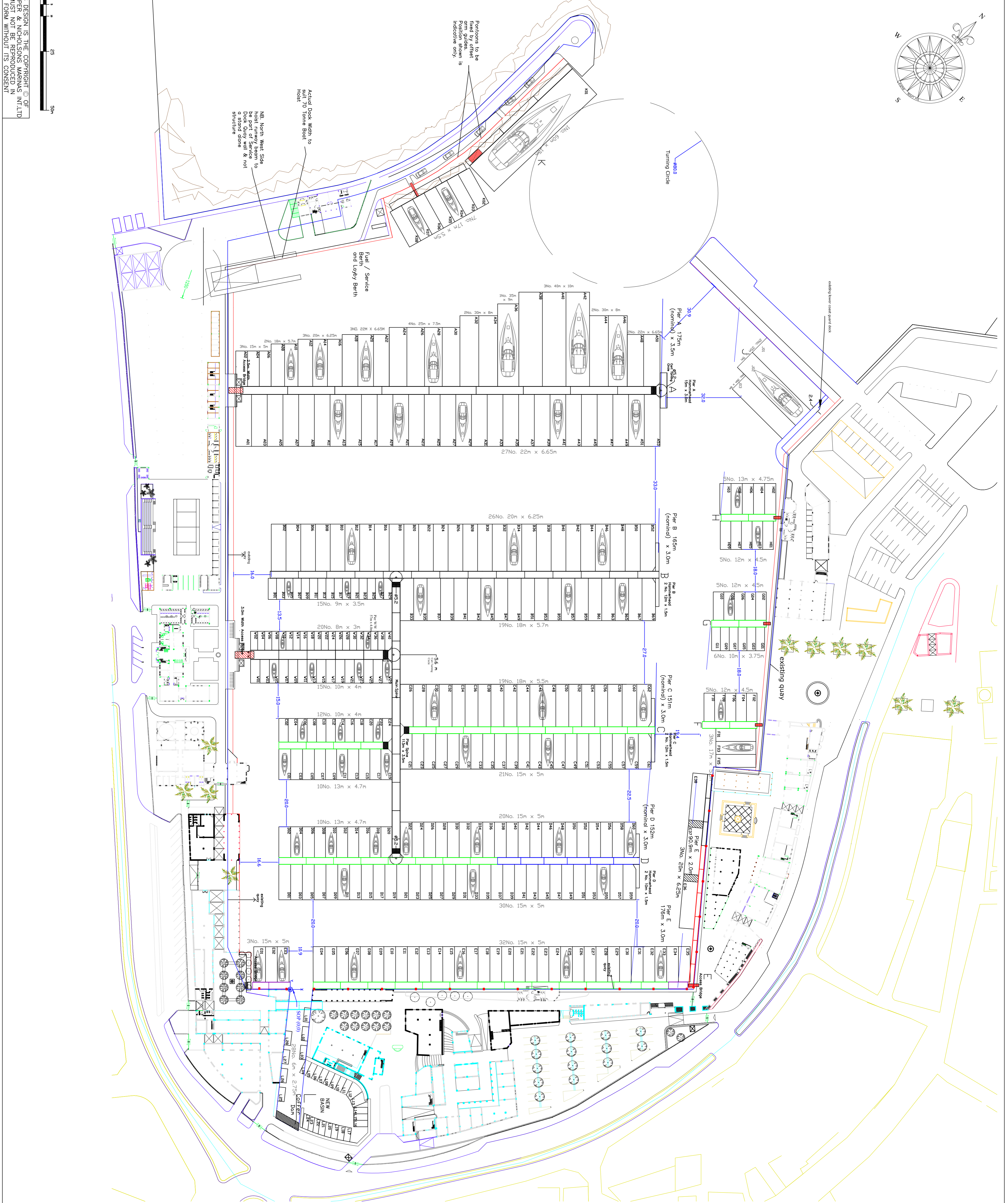


THIS DESIGN IS THE COPYRIGHT © OF
 CAMPER & NICHOLSON'S MARINAS INT'L LTD
 AND MUST NOT BE REPRODUCED IN
 ANY FORM WITHOUT ITS CONSENT



Area	Beam (m)	Area (m ²)	Total
10A	4.0	2.7	26
4	3.5	1.0	15
5	4.0	1.3	31
13	4.5	8.7	22
13	4.5	1.5	10
17	5.5	8.1	10
18	5.7	1.0	2
22	6.6	7.0	23
25	7.5	9.9	4
30	8.0	12.0	4
35	9.0	14.4	3
40	10.0	17.0	1
Total			173

IC ESME
 11/20/20
 3/4

REV	DATE	DETAILS	BY
11	JUL/09	ISSUED PHASE AND ADDITION OF FUEL PORTIONS PIER E	MS
10	FEB/09	NEW PHASE I	MS
9	JAN/09	PHASE I - EXCLUDING L, F, G, H, K & FUEL BERTH	MS
8	SEP/08	3 x 3m wide PORTIONS ON PIER E INSTEAD OF 4x12m DECK	MS
7	AUG/08	HAMMER HEADS ON 'C' & 'D' AND CLARIS	MS
6	AUG/08	C & D RECONFIGURATION & STD BERTH SIZES	MS
5	JUL/08	LAND CONCRETES & CLARIS	MS
4	JUL/08	REVISIONS TO PHASE I - SLOWLY	MS
3	JUL/08	FINALISED MASTER PLAN	MS
2			MS
1			MS

TITLE
 IC ESME
 MARINA

TYPE
 Berth Layout

C & N Marinas Int. Ltd.
 The Treasury Building
 Vittoriosa
 Malta
 BRG 1721

DATE 01/07/09 SCALE 1:750 DRAWN MS
 CHECKED WNG

DRG No. CMM1CLB011 Sheet 1